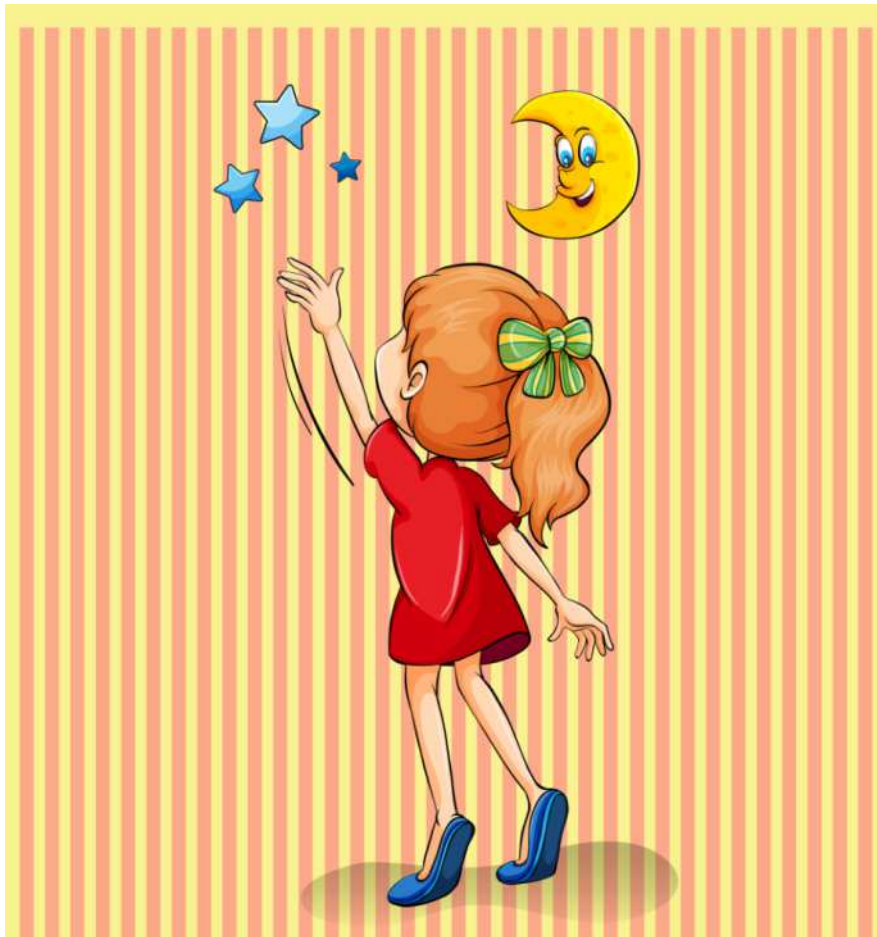


LETTER RIDDLE



As the saying goes...

Each number represents one letter. Write the correct letters in the boxes below and find out which proverb is hidden here.
The saying means to want or try to get something that is difficult or impossible.



A	B	C	D	E	F	G	H	I	J	K	L	M	N	O
1	2	3	4	5	6	7	8	9	10	11	12	13	14	15

P	Q	R	S	T	U	V	W	X	Y
16	17	18	19	20	21	22	23	24	25

18	5	1	3	8

6	15	18

20	8	5

19	20	1	18	19

!