

Math Riddle Cards - Numbers up to 100

I am $> 17+9$.

I am $< 6 \times 6$.

I am divisible by 8!

Who am I?

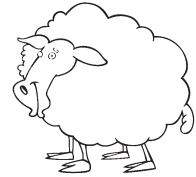


myhomeschoolmath.com

4 times of me is > 20 .

3 times of me is < 20 .

Who am I?



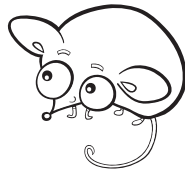
myhomeschoolmath.com

I am $< 6 \times 8$.

I am $> 36+5$.

The sum of my digits is 10.

Who am I?



myhomeschoolmath.com

I am $< 23+22$.

I am $> 5 \times 8$.

I am divisible by 6!

Who am I?



myhomeschoolmath.com

I am $< 7 \times 5$.

I am an even number!

If I am divided by 8 you will
get the number > 3 .

Who am I?



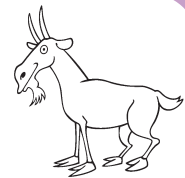
myhomeschoolmath.com

I am $> 5 \times 5$.

I am $< 45-12$.

I am divisible by 9!

Who am I?



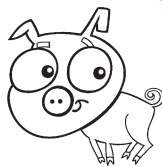
myhomeschoolmath.com

I am $> 8 \times 7$.

I am $< 6 \times 10$.

The sum of my digits is an
odd number.

Who am I?



myhomeschoolmath.com

I am $< 65-32$.

If I am divided by 5
you will get more than 5.

Who am I?



myhomeschoolmath.com

Math Riddle Cards - Numbers up to 100

I am 6.



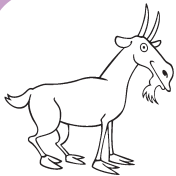
I am 32.



I am 42.



I am 46.



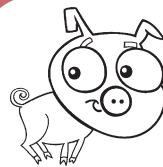
I am 27.



I am 32.



I am 30.



I am 58.