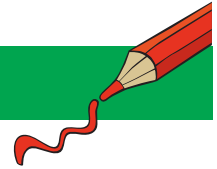
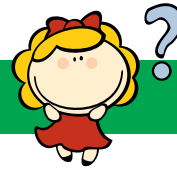


NONOGRAM 15X10

Hedgehog



The numbers in front of the rows and above the columns mean the blocks of boxes that will be colored.

- Each numerical value corresponds exactly to the length of a block.
- If there are several numbers, their sequence corresponds to the order of the blocks.
- There must be at least one empty box between two blocks of the same color.
- There may or may not be an empty box between two blocks of different colors.

Tip: Start with the big blocks.

				2															
		1		3	1	2	3												
		1	2	1	2	5	5	9	9	10	10	10	9	9	8	7			
	3																		
	7																		
	9																		
	11																		
	1	11																	
	1	4	9																
	3	1	2	9															
		5	9																
		1	3	9															
		2	9																