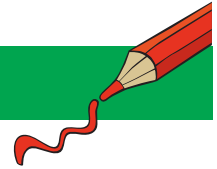
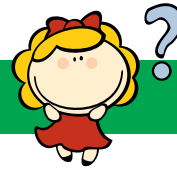


NONOGRAM 10X15

Duck



The numbers in front of the rows and above the columns mean the blocks of boxes that will be colored.

- Each numerical value corresponds exactly to the length of a block.
- If there are several numbers, their sequence corresponds to the order of the blocks.
- There must be at least one empty box between two blocks of the same color.
- There may or may not be an empty box between two blocks of different colors.

Tip: Start with the big blocks.

			2	2			2	2		
			2	3	6	6	3	2		
		6	1	6	1	1	6	1	6	
1	3	3	1	6	6	1	3	3	1	
2	2	2	2	2	2	2	2	2	2	2
		6								
		8								
		1	2	1						
1	1	2	1	1						
1	1	2	1	1						
1	1	2	1	1						
		3	2	3						
		6								
		4								
		6								
		2	4	2						
		3	4	3						
		3	3							
		10								
		10								