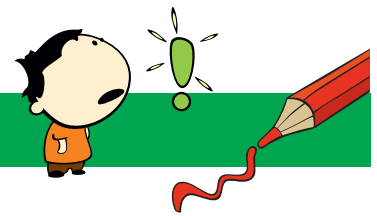


NONOGRAM 15X15

Cactus



The numbers in front of the rows and above the columns mean the blocks of boxes that will be colored.

- Each numerical value corresponds exactly to the length of a block.
- If there are several numbers, their sequence corresponds to the order of the blocks.
- There must be at least one empty box between two blocks of the same color.
- There may or may not be an empty box between two blocks of different colors.

Tip: Start with the big blocks.

			1			5						1			
			1			1						1			
		1	1	1		5	1	7		2	1	1		1	1
		3	3	4	3	1	1	1		1	1	3	4	4	2
		2	2	2	2	7	6	7	15	11	10	2	2	2	2
2															
4															
1	5	1													
1	1	1	4	1	1	1									
1	1	1	5	1	1										
10	1	1	1												
5	1	4	2	1											
3	1	1	1	7											
1	1	8													
9															
6															
6															
6															
4	6	5													
4	6	5													