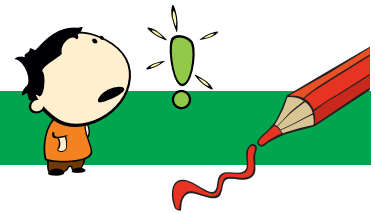


# NONOGRAM 10X15

*Giraffe*



The numbers in front of the rows and above the columns mean the blocks of boxes that will be colored.

- Each numerical value corresponds exactly to the length of a block.
  - If there are several numbers, their sequence corresponds to the order of the blocks.
  - There must be at least one empty box between two blocks of the same color.
  - There may or may not be an empty box between two blocks of different colors.
- Tip: Start with the big blocks.

										2									
											1								
												1							