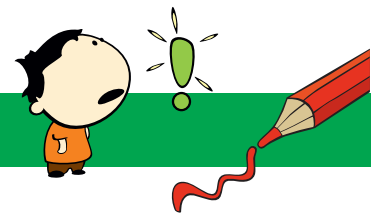


NONOGRAM 15X20

Dog



The numbers in front of the rows and above the columns mean the blocks of boxes that will be colored.

- Each numerical value corresponds exactly to the length of a block.
- If there are several numbers, their sequence corresponds to the order of the blocks.
- There must be at least one empty box between two blocks of the same color.
- There may or may not be an empty box between two blocks of different colors.

Tip: Start with the big blocks.

				2											2					
						10	2	3	5								1	2		
						1	4	2	2						6	4	6			
					5	1	2	1	1						2	3	2			
					6	2	2	2	2	5	1	1	1	5	2	2	2	2	1	5
					2	1	1	1	1	2	1	1	1	2	1	1	1	1	1	2
1	1																			
2	2																			
4	4																			
2	1	2	2	1	2															
2	2	7	2	2																
					15															
					7	1	7													
					6	1	6													
					3	2	1	2	3											
					2	1	1	1	2											
					1	2	2	1												
					1	2	2	1												
					1	3	1													
					1	3	1													
					1	1	1													
					1	3	1													
					4	4														
					1	4	5	4	1											
					1	4	1	1	4	1										
					4	4														