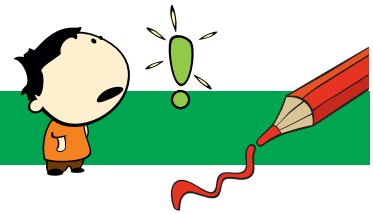


NONOGRAM 15X20

Frog



The numbers in front of the rows and above the columns mean the blocks of boxes that will be colored.

- Each numerical value corresponds exactly to the length of a block.
- If there are several numbers, their sequence corresponds to the order of the blocks.
- There must be at least one empty box between two blocks of the same color.
- There may or may not be an empty box between two blocks of different colors.

Tip: Start with the big blocks.

					1										1							
					3										3						1	
					2										1						3	
					3	1	1								3	1	1				3	
					1	1	1								4	5	5	5	4	1	1	1
					1	3	3								1	3	3				1	
3	3	5	5	4	1	1	1	1	1	1	4	5	5	3	3	1	3	3	1	3	3	
3	1	3	1	3	1	1	1	1	1	1	3	1	3	1	3	1	3	1	3	1	3	
3	1	6	7	1	8	4	7	4	8	1	7	6	1	3	3	1	3	1	3	1	3	
2	1	1	2	1	1	5	1	5	1	1	2	1	1	2	1	1	2	1	1	2	1	
				4	4																	
			1	4	1	1	4	1														
	1	1	2	1	5	1	2	1	1													
1	1	2	1	1	3	1	1	2	1	1												
					4	5	4															
				1	11	1																
				1	13	1																
				1	13	1																
			1	3	7	3	1															
				1	11	1																
					11																	
				1	9	1																
				1	9	1																
				1	11	1																
				1	13	1																
1	3	1	1	1	1	1	1	1	1	3	1											
1	3	1	1	1	1	1	1	1	1	3	1											
1	2	1	1	1	1	1	1	1	1	2	1											
	1	2	1	2	3	2	1	2	1													
				7	7																	