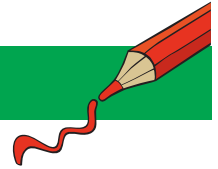
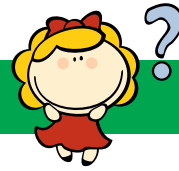


NONOGRAM 10X10

Fawn



The numbers in front of the rows and above the columns mean the blocks of boxes that will be colored.

- Each numerical value corresponds exactly to the length of a block.
- If there are several numbers, their sequence corresponds to the order of the blocks.
- There must be at least one empty box between two blocks of the same color.
- There may or may not be an empty box between two blocks of different colors.

Tip: Start with the big blocks.

		2							1	
		1		3	3	1	1		4	1
		2	5	2	2	2	2	9	2	2
	1	X	X	X	X	X		X	X	X
	4	X	X	X	X	X				X
	1 1 1	X	X	X	X	X	X			X
	1 2 1	X	X	X	X	X	X			
	1 1 1		X	X	X	X	X			X
	7 1								X	X
	1 6 1 1								X	
	3 2 1 1	X							X	X
	1 1 4 1 3									
	1 1 4 1 3									