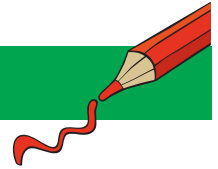
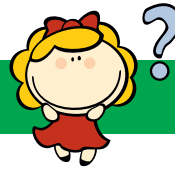


NONOGRAM 10X10

Chicken



The numbers in front of the rows and above the columns mean the blocks of boxes that will be colored.

- Each numerical value corresponds exactly to the length of a block.
- If there are several numbers, their sequence corresponds to the order of the blocks.
- There must be at least one empty box between two blocks of the same color.
- There may or may not be an empty box between two blocks of different colors.

Tip: Start with the big blocks.

				2			2			
				1			1			
			2	1	4	4	1	2		
			1	3	1	1	3	1		
	1	2	3	1	3	3	1	3	2	1
	1	1	1	1	1	1	1	1	1	1
2	X	X	X	X			X	X	X	X
4	X	X	X					X	X	X
6	X	X							X	X
1 1 2 1 1	X	X							X	X
2 2 2 2 2										
8	X									X
6	X	X							X	X
6	X	X							X	X
1 1	X	X	X		X	X		X	X	X
10										