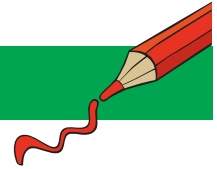
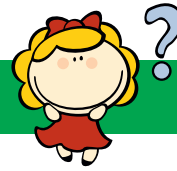


# NONOGRAM 10X15

*Duck*



The numbers in front of the rows and above the columns mean the blocks of boxes that will be colored.

- Each numerical value corresponds exactly to the length of a block.
- If there are several numbers, their sequence corresponds to the order of the blocks.
- There must be at least one empty box between two blocks of the same color.
- There may or may not be an empty box between two blocks of different colors.

Tip: Start with the big blocks.

			2	2			2	2		
			2	3	6	6	3	2		
		6	1	6	1	1	6	1	6	
	1	3	3	1	6	6	1	3	3	1
	2	2	2	2	2	2	2	2	2	2
	6	X	X						X	X
	8	X								X
	1	2	1	X	X			X	X	X
1	1	2	1	1	X				X	X
1	1	2	1	1	X				X	X
1	1	2	1	1	X				X	X
	3	2	3	X						X
	6	X	X						X	X
	4	X	X	X					X	X
	6	X	X						X	X
	2	4	2	X						X
	3	4	3							
	3	3	X							X
	10									
	10									