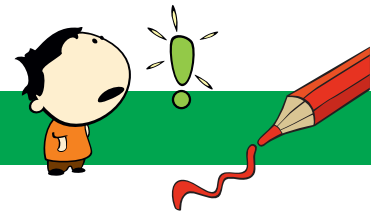


NONOGRAM 15X15

Cat



The numbers in front of the rows and above the columns mean the blocks of boxes that will be colored.

- Each numerical value corresponds exactly to the length of a block.
- If there are several numbers, their sequence corresponds to the order of the blocks.
- There must be at least one empty box between two blocks of the same color.
- There may or may not be an empty box between two blocks of different colors.

Tip: Start with the big blocks.

				3									3		
				2	2	2	3	3	4	3	3	2	2	2	
		4	1	6	4	2	5	3	5	2	4	6	1	4	
		1	1	1	1	2	1	2	1	1	2	1	1	1	
	6	3	3	2	4	5	2	2	2	5	4	2	3	3	6
	1	2	2	3	3	2	2	2	2	2	3	3	2	2	1
		1	1	X	X	X	X		X	X	X	X	X	X	X
		3	3	X	X	X			X	X	X		X	X	X
	2	1	5	1	2	X	X							X	X
	1	2	5	2	1	X	X							X	X
	2	3	3	3	2	X									X
	2	5	1	5	2										
2	2	2	3	2	2										
3	1	1	3	1	1										
		1	13	1											
	4	3	1	3	4										
	3	3	3	3	3										
		2	9	2		X									X
		2	5	2		X	X	X					X	X	X
			13			X									X
			15												