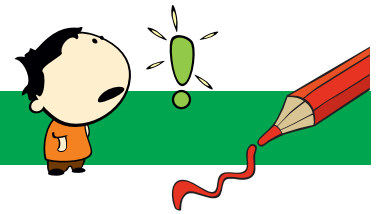


NONOGRAM 15X15

Penguin



The numbers in front of the rows and above the columns mean the blocks of boxes that will be colored.

- Each numerical value corresponds exactly to the length of a block.
- If there are several numbers, their sequence corresponds to the order of the blocks.
- There must be at least one empty box between two blocks of the same color.
- There may or may not be an empty box between two blocks of different colors.

Tip: Start with the big blocks.

				1	1	1		1	1	1							
				2	1	2		2	1	2							
				1	2	1	1	1	1	1		1					
				3	2	8	2	2	1	2	1	2	2	8	2	3	
				3	5	1	1	1	1	2	1	1	1	1	5	3	
				3	1	4	1	1	1	1	1	1	1	1	4	1	3
				3	X	X	X	X	X	X	X	X	X	X	X	X	X
				2	3	2	X	X	X	X	X	X	X	X	X	X	X
				1	7	1	X	X	X	X	X	X	X	X	X	X	X
				1	2	2	1	X	X	X	X	X	X	X	X	X	X
				1	1	1	1	X	X	X	X	X	X	X	X	X	X
				1	2	2	1	X	X	X	X	X	X	X	X	X	X
				1	2	1	1	2	1	X	X	X	X	X	X	X	X
				1	2	2	2	2	1	X	X	X	X	X	X	X	X
				1	5	3	5	1	X	X	X	X	X	X	X	X	X
				1	6	1	6	1	X	X	X	X	X	X	X	X	X
				1	1	1	1	1	1	1	1	1	1	1	1	1	1
				2	2	X	X	X	X	X	X	X	X	X	X	X	X
				1	1	X	X	X	X	X	X	X	X	X	X	X	X
				1	4	1	4	1	X	X	X	X	X	X	X	X	X
				4	4	X	X	X	X	X	X	X	X	X	X	X	X