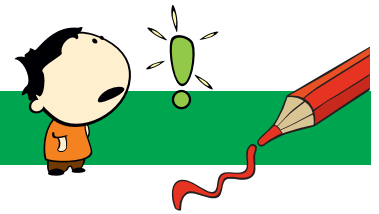


NONOGRAM 15X15

Bear



The numbers in front of the rows and above the columns mean the blocks of boxes that will be colored.

- Each numerical value corresponds exactly to the length of a block.
- If there are several numbers, their sequence corresponds to the order of the blocks.
- There must be at least one empty box between two blocks of the same color.
- There may or may not be an empty box between two blocks of different colors.

Tip: Start with the big blocks.

						3	5	6	6		3			
			1	1	4	2	1	1	1	2	2		1	
			2	2	1	2	1	1	1	2	1		2	
			5	4	1	1	1	1	1	1	1	7	5	1
			2	4	2	1	1	1	1	1	2	4	2	2
			3	10	1	1	2	2	2	1	1	1	7	3
			2	2	3	3	2	2	2	3	3	3	2	2
			4	3		X	X	X	X	X	X			X
2	2	2	2	2	2	1				X				
		2	2	8	2	1								
				15										
			3	3	3	X				X	X			X
			3	1	3	1	3			X				X
			4	1	3	1	4			X				
			3	3	3	3	3							
2	2	1	5	1	2	2								
		1	3	5	3	1	X							X
			1	9	1	X	X							X
					9	X	X	X					X	X
			4	3	4	X	X							X