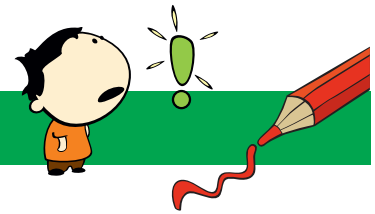


# NONOGRAM 15X10

*Car*



The numbers in front of the rows and above the columns mean the blocks of boxes that will be colored.

- Each numerical value corresponds exactly to the length of a block.
- If there are several numbers, their sequence corresponds to the order of the blocks.
- There must be at least one empty box between two blocks of the same color.
- There may or may not be an empty box between two blocks of different colors.

Tip: Start with the big blocks.

				1	1							1							
				2	1							1	1						
				1		4	1	1	2		3	3	2	1	1	3			1
				1	4	2	1	1	2	7	3	3	2	1	1	2	3		2
				1	1	1	1	1	1	1	1	1	1	1	1	1	1	1	1
			5	X	X	X	X						X	X	X	X	X	X	X
	1	2	1	2	1	X								X	X	X	X	X	X
	1	3	1	3	1	X								X	X	X	X	X	X
	3	3	1	4	2											X	X	X	X
			14	1															
	1	2	2	5	2	3													
2	1	1	3	1	1	2			X	X				X	X				
	1	1	1	1	X	X			X	X			X	X	X			X	X
		2	2	X	X	X			X	X	X	X	X			X	X	X	X
			15																