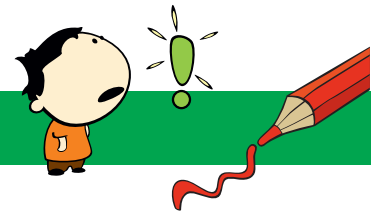


NONOGRAM 15X10

Swail



The numbers in front of the rows and above the columns mean the blocks of boxes that will be colored.

- Each numerical value corresponds exactly to the length of a block.
- If there are several numbers, their sequence corresponds to the order of the blocks.
- There must be at least one empty box between two blocks of the same color.
- There may or may not be an empty box between two blocks of different colors.

Tip: Start with the big blocks.

				2	1	1	1	2	2										
				2	2	1	3	2	2										
			3	2	4	5	1	2	1	2	2								
			2	1	1	1	1	1	2	3	1	2							
	4	6	3	2	1	1	3	2	1	2	2	3							
	1	1	1	1	1	1	1	1	1	1	1	2	3	7	6	2			
			5	1	1	X	X	X						X	X	X			
		2	3	2	1	1	X	X						X	X				
	2	2	1	2	2	2	X							X	X				X
	3	1	2	3	2	2								X					X
	2	1	5	2	2	2													X
2	1	3	1	2	2	1	2												X
	3	1	3	3	2	2													X
	3	2	2	1	2	3	X												X
			8	3	X	X													X
				12															X