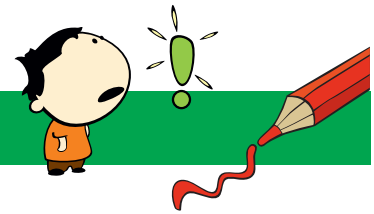


NONOGRAM 15X20

Frog



The numbers in front of the rows and above the columns mean the blocks of boxes that will be colored.

- Each numerical value corresponds exactly to the length of a block.
- If there are several numbers, their sequence corresponds to the order of the blocks.
- There must be at least one empty box between two blocks of the same color.
- There may or may not be an empty box between two blocks of different colors.

Tip: Start with the big blocks.

					1											1						
					1					3						1						
					3					1						3						
					2					3						1						
					3					1						1						
					1					1						1						
					1					1						1						
					1					1						1						
					1					1						1						
					1					1						1						
					3					3						3						
					3					3						3						
					3					3						3						
					2					1						1						
					4					4						4						
					1					4						1						
					1					1						2						
					1					1						1						
					4					5						4						
					1					11						1						
					1					13						1						
					1					13						1						
					1					3						7						
					1					11						1						
					11					11						11						
					1					9						1						
					1					9						1						
					1					11						1						
					1					13						1						
					1					3						1						
					1					3						1						
					1					2						1						
					1					2						1						
					7					7						7						