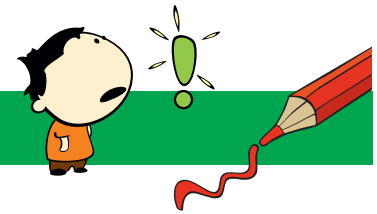


NONOGRAM 15X20

Dog



The numbers in front of the rows and above the columns mean the blocks of boxes that will be colored.

- Each numerical value corresponds exactly to the length of a block.
- If there are several numbers, their sequence corresponds to the order of the blocks.
- There must be at least one empty box between two blocks of the same color.
- There may or may not be an empty box between two blocks of different colors.

Tip: Start with the big blocks.

									2	1		1	2								
									3	3	1	3	3								
				1	2	1			2	1	6	2	1				1				
			1	2	1				1	1	3	1	1	1			2	1			
			3	2	1				2	3	1	3	2			1	2	3			
		1	5	8	1				2	1	1	1	2	1		1	8	5	1		
		3	3	1	10	1	1	1	1	2	1	1	1	10	1	3	3				
		1	1	2	1	3	1	1	1	3	1	3	1	2	1	1	1				
		4	3	3	3	5	2	4	2	4	2	5	3	3	3	4					
			3	3	X				X	X	X	X	X	X							X
	1	3	1	1	3	1			X	X	X	X	X								
	1	4	1	1	4	1			X	X	X										
	1	2	9	2	1																
		4	7	4																	
		1	9	1	X	X														X	X
		1	9	1	X	X														X	X
	1	2	1	1	1	2	1	X													X
	1	2	2	1	2	2	1	X													X
		1	11	1	X																X
	1	3	5	3	1	X															X
	1	3	5	3	1	X															X
	1	3	3	3	1	X	X														X
		1	7	1	X	X	X													X	X
			7		X	X	X	X												X	X
	1	2	3	2	1	X	X	X												X	X
	1	3	1	3	1	X	X	X												X	X
		1	9	1	X	X															X
1	2	1	1	1	1	1	2	1	X	X											X
1	2	1	1	1	1	1	2	1	X	X											X